



Overstone Road
Sywell, Northamptonshire

oriordanbond
SALES & LETTINGS



Overstone Road

Sywell
NN6 0AW

Price
£650,000

An individually built four/five bedroom detached family home, on a large private plot, set back from the road with access via automated gates. This rarely available spacious family home is offered for sale with no onward chain and offers just under 2,700 sq. ft. of versatile living space. The property offers scope to improve or extend (subject to planning permission.) Entered via a long private gravelled drive, leading to an oversized double garage with parking for around eight cars and large wrap around gardens, this lovely family home has vast potential and offers lovely views from the substantial garden.

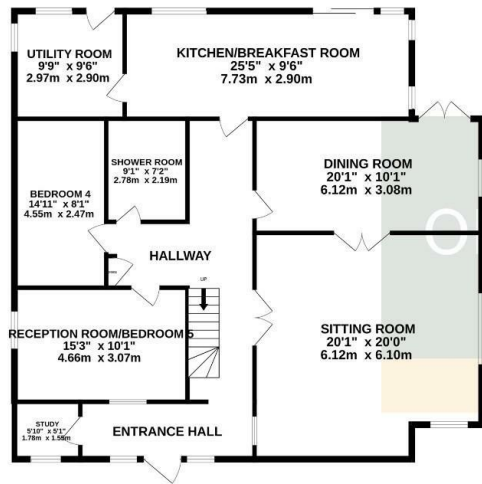
Accommodation comprises entrance hall, office/study, sitting room, dining room, good size kitchen/breakfast room with door to utility room, family room/bedroom five, bedroom four being double in size, cloakroom/shower room, first floor landing with ample eaves storage, master bedroom with en-suite shower room, bedrooms two and three both being double in size and a family bathroom. Benefits include double glazing and gas central heating. Outside, the property is secluded and entered via a gravelled drive leading to electric double gates opening to parking for approximately eight cars with oversized double garage. The good size mature south facing wrap around gardens offer a large patio area ideal for entertaining and substantial lawn areas with stunning views and a high degree of privacy. (A/2688/XL)

- Individually built four/five bedroom detached family home
- En-suite to master bedroom
- Three/four reception rooms
- Large private plot with wrap around gardens
- Gated ample off road parking and double garage
- No onward chain

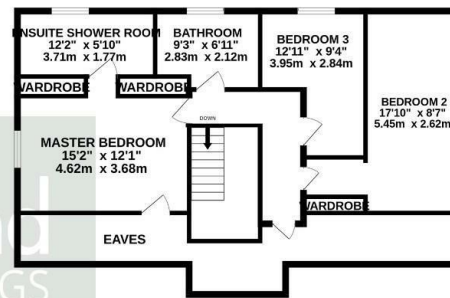




GROUND FLOOR
1849 sq.ft. (171.7 sq.m.) approx.



1ST FLOOR
839 sq.ft. (78.0 sq.m.) approx.



TOTAL FLOOR AREA : 2688 sq.ft. (249.7 sq.m.) approx.

Whilst every attempt has been made to ensure the accuracy of the floorplan contained here, measurements of doors, windows, rooms and any other items are approximate and no responsibility is taken for any error, omission or mis-statement. This plan is for illustrative purposes only and should be used as such by any prospective purchaser. The services, systems and appliances shown have not been tested and no guarantee as to their operability or efficiency can be given.
Made with Metropix ©2025



Additional information

- Council Tax Band: G
- Energy Efficiency Rating: E

Viewing

Viewing strictly by appointment – details below

Disclaimer

O’Riordan Bond Estate Agents Limited has not tested apparatus, equipment, fittings or services and so cannot verify they are in working order. The buyer is advised to obtain verification from their solicitor or surveyor.

O’Riordan Bond Earls Barton Sales

01604 810088

earlsbarton@oriordanbond.co.uk

